

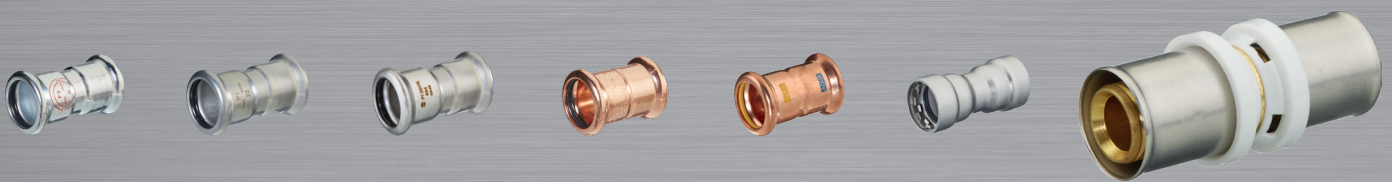
PCCO

PRESS CONNECTING COMPONENTS

UNIPRESS+



THE WORLD OF
PRESS CONNECTING COMPONENTS



Mathewson
& Rosemond Ltd



Press Fittings – Product Overview

System	Picture	Press Profile	Dimensions	Material
PRESS STEEL M		M	12 – 108mm	Carbon Steel
PRESS INOX M 316L		M	15 – 168.3mm	Stainless Steel 316L
PRESS INOX M 304		M	15 – 108mm	Stainless Steel 304
PRESS COPPER M		M	15 – 108mm	Copper + Brass
PRESS COPPER AQUAGAS M		M	15 – 54mm	Copper + Brass
PRESS STEEL HD		HD	1/2" – 2"	Carbon Steel
PRESS UNIPRESS+		TH	16 – 26mm 32mm available soon	Brass + Stainless Sleeve

Press Fittings – Application

System	W WATER	H HEATING	G GAS	A COMPRESSED AIR	S SOLAR	F FIREFIGHTING SYSTEMS	C COOLING	H2 READY	I INDUSTRY
PRESS STEEL M	X	✓	X	✓ [1]	X	✓	✓	X	on request
PRESS INOX M 316L	✓	✓	on request	✓ [1]	✓ [1]	✓	✓	X	on request
PRESS INOX M 304	✓ [2]	✓	X	✓ [1]	✓ [1]	X	✓	X	on request
PRESS COPPER M	✓	✓	on request	on request	✓ [1]	X	✓	X	on request
PRESS COPPER AQUAGAS M	✓	✓	✓	on request	✓ [1]	X	✓	✓	on request
PRESS STEEL HD	X	✓	X	X	X	✓	✓	X	on request
PRESS UNIPRESS+	✓	✓	X	on request	X	X	X	X	on request

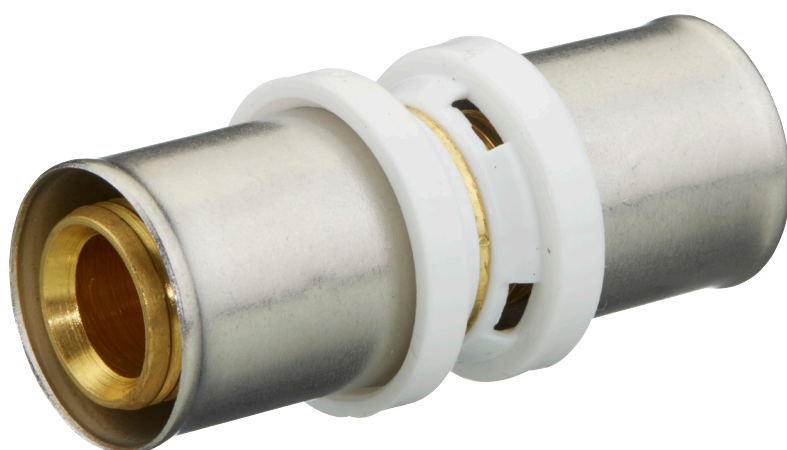
✓ [1] = with FKM (Viton) O-ring only

X = not suitable

✓ [2] = Industrial applications ON REQUEST

Press Fittings and Pipe Guide

PCC PRESS UNIPRESS+



ÉPÍTÉSÜGYI
MINŐSÉGELLENŐRZŐ
INNOVÁCIÓS NKFT.





Straight Male Adaptor	MPN	Press Profile	Box Quantity (pieces)
16 x 2.0 - 1/2"	3501016012	TH	150
16 x 2.0 - 3/4"	3501016034	TH	150
20 x 2.0 - 1/2"	3501020012	TH	150
20 x 2.0 - 3/4"	3501020034	TH	150
26 x 3.0 - 3/4"	3501026034	TH	100
26 x 3.0 - 1"	3501026100	TH	80
32 x 3.0 - 1" *	3501032100	TH	50



Straight Female Adaptor	MPN	Press Profile	Box Quantity (pieces)
16 x 2.0 - 1/2"	3502016012	TH	150
20 x 2.0 - 1/2"	3502020012	TH	150
20 x 2.0 - 3/4"	3502020034	TH	100
26 x 3.0 - 3/4"	3502026034	TH	100
26 x 3.0 - 1"	3502026100	TH	70
32 x 3.0 - 1" *	3502032100	TH	50



90° Elbow	MPN	Press Profile	Box Quantity (pieces)
16 x 2.0 - 16 x 2.0	353001616	TH	150
20 x 2.0 - 20 x 2.0	353002020	TH	80
26 x 3.0 - 26 x 3.0	353002626	TH	50
32 x 3.0 - 32 x 3.0 *	353003232	TH	30



90° Male Elbow	MPN	Press Profile	Box Quantity (pieces)
16 x 2.0 - 1/2"	3531016012	TH	150
20 x 2.0 - 1/2"	3531020012	TH	120
20 x 2.0 - 3/4"	3531020034	TH	50
26 x 3.0 - 3/4"	3531026034	TH	50
32 x 3.0 - 1" *	3531032100	TH	30



90° Female Elbow	MPN	Press Profile	Box Quantity (pieces)
16 x 2.0 - 1/2"	3532016012	TH	120
20 x 2.0 - 1/2"	3532020012	TH	100

* Available SOON



Equal Tee	MPN	Press Profile	Box Quantity (pieces)
16 x 2.0 - 16 x 2.0 - 16 x 2.0	35100161616	TH	60
20 x 2.0 - 20 x 2.0 - 20 x 2.0	35100202020	TH	50
26 x 3.0 - 26 x 3.0 - 26 x 3.0	35100262626	TH	30
32 x 3.0 - 32 x 3.0 - 32 x 3.0 *	35100323232	TH	20



Female Tee	MPN	Press Profile	Box Quantity (pieces)
16 x 2.0 - 1/2" - 16 x 2.0	35120161216	TH	60
20 x 2.0 - 1/2" - 20 x 2.0	35120201220	TH	50
26 x 3.0 - 1/2" - 26 x 3.0	35120261226	TH	30
32 x 3.0 - 1/2" - 32 x 3.0 *	35120321232	TH	20



Reducing Tee	MPN	Press Profile	Box Quantity (pieces)
16 x 2.0 - 20 x 2.0 - 16 x 2.0	35110162016	TH	50
20 x 2.0 - 16 x 2.0 - 16 x 2.0	35110201616	TH	50
20 x 2.0 - 20 x 2.0 - 16 x 2.0	35110202016	TH	50
26 x 3.0 - 20 x 2.0 - 20 x 2.0	35110262020	TH	30
20 x 2.0 - 16 x 2.0 - 20 x 2.0	35110201620	TH	50
26 x 3.0 - 16 x 2.0 - 26 x 3.0	35110261626	TH	30
26 x 3.0 - 20 x 2.0 - 26 x 3.0	35110262026	TH	30
26 x 3.0 - 26 x 3.0 - 20 x 2.0	35110262620	TH	30
32 x 3.0 - 20 x 2.0 - 32 x 3.0 *	35110322032	TH	20
32 x 3.0 - 26 x 3.0 - 32 x 3.0 *	35110322632	TH	20



Straight Coupling	MPN	Press Profile	Box Quantity (pieces)
16 x 2.0 - 16 x 2.0	350001616	TH	200
20 x 2.0 - 20 x 2.0	350002020	TH	150
26 x 3.0 - 26 x 3.0	350002626	TH	100
32 x 3.0 - 32 x 3.0 *	350003232	TH	50



Reducing Coupling	MPN	Press Profile	Box Quantity (pieces)
20 x 2.0 - 16 x 2.0	350302016	TH	150
26 x 3.0 - 20 x 2.0	350302620	TH	100
32 x 3.0 - 26 x 3.0 *	350303226	TH	50

* Available SOON



Tap Connector	MPN	Press Profile	Box Quantity (pieces)
16 x 2.0 - 3/4"	3507016034	TH	50
20 x 2.0 - 3/4"	3507020034	TH	50



End Cap	MPN	Press Profile	Box Quantity (pieces)
16 x 2.0	3541016	TH	50
20 x 2.0	3541020	TH	50
26 x 3.0	3541026	TH	25
32 x 3.0 *	3541032	TH	25



Female Wallplate 90° Elbow	MPN	Press Profile	Box Quantity (pieces)
16 x 2.0 - 1/2"	3534016012	TH	50
20 x 2.0 - 1/2"	3534020012	TH	50



Radiator Connector Elbow	MPN	Press Profile	Box Quantity (pieces)
16 x 2.0 - 15	354701615	TH	30



Insert Adaptor	MPN	Press Profile	Box Quantity (pieces)
16 x 2.0 - 15	354801615	TH	150
20 x 2.0 - 15	354802015	TH	150
20 x 2.0 - 22	354802022	TH	100
26 x 3.0 - 22	354802622	TH	50
26 x 3.0 - 28	354802628	TH	50

* Available SOON



Multilayer Pipe PEX/AL/PEX	MPN	Coil (m)
UNIPRESS ML-PIPE 16 x 2.0	359001620	200
UNIPRESS ML-PIPE 20 x 2.0	359002020	100
UNIPRESS ML-PIPE 26 x 3.0	359002630	50
UNIPRESS ML-PIPE 32 x 3.0 *	359003230	50



Multilayer Pipe PEX/AL/PEX Pre-Insulated **	MPN	Coil (m)
UNIPRESS ML-PIPE 16 x 2.0 - 9mm ***	359801620	50
UNIPRESS ML-PIPE 20 x 2.0 - 9mm ***	359802020	50
UNIPRESS ML-PIPE 26 x 3.0 - 9mm ***	359802630	25
UNIPRESS ML-PIPE 32 x 3.0 - 9mm * ***	359803230	25

* Available SOON

** Available in **RED** or **BLUE**

*** 13mm wall pre-insulated pipe available upon request

Specification

Materials:

Pipe: UNIPRESS+ ML-PIPE is a multi-layer composite system consisting of:

- Layer 1: Internal pipe PEX;
- Layer 2: Adhesive layer;
- Layer 3: Butt-welded aluminium layer (acts as an oxygen barrier and helps with forming and bending the pipe, also reduces thermal expansion by removing a large degree of the heat out of the plastic);
- Layer 4: Adhesive layer;
- Layer 5: External layer PEX.

Insulated Pipe: Foamed PE co-extruded coated with moisture resistant film that offers UV protection. Insulated Pipe reaction to fire EN 13501-1 B₁-S2-DO.

Fittings: UNIPRESS+ press fittings are made of DZR brass and provide a secure double O-ring sealing system using EPDM grade rubber seals. The pressing collars are made of stainless steel.

"Leak Before Press" - new and improved design to enable leak detection before pressing the fitting for trouble-free installation.

Guarantee:

Provided your UNIPRESS+ press system has been installed correctly and as per the installation guidelines set out by PCC, you can enjoy 25 years of trouble-free service and operation from your new system. If you would like further information on training and installation techniques, or guarantee details, please contact us.

Applications:

- Drinking Water (fully WRAS approved);
- Heating (including UFH);
- Air Conditioning (Closed Cooling Water Systems).

Pressure and temperature ratings:

- 6 bar +90°C (max)
- 10 bar +70°C


Press tools:

UNIPRESS+ MLCP press system accepts 'TH' pressing profile. Please see manufacturers' website for details on pressing tools.



WRAS PRODUCT APPROVAL CERTIFICATE

Approval Number
241102079

Field of application	Products complying with the Water Supply (Water Fittings) Regulations 1999 (England & Wales), the Water Supply (Water Fittings) (Scotland) Byelaws 2014 and the Water Supply (Water Fittings) Regulations (Northern Ireland) 2009.
Approval holder	PCC GmbH
WRAS directory section	1100
Product type	Fittings and Pipe - Compatible Systems
Model	UNIPRESS RANGE OF PIPE & FITTINGS (FOR MODELS AND SIZES COVERED BY THE SCOPE OF THIS APPROVAL PLEASE CONSULT THE WRAS ONLINE DIRECTORY AND/OR ACCOMPANYING WRAS APPROVAL LETTER)
Basis of compliance	Tested to regulators Specification Test Code Sheets
Valid from	1st November 2024
Date of expiry	30th November 2029
Authorised by	 Ian Hughes, WRAS Approvals Manager



The certificate by itself is not evidence of a valid WRAS Approval. The certificate must always be shared with the supporting letter. Confirmation of the current status of an approval must be obtained from the WRAS Approvals Directory (www.wrasapprovals.co.uk/directory/)



Certificate issued: 18th March 2025



Commercial Plumbing, Ventilation & Pipeline Merchants

Mathewson & Rosemond represents PCC GmbH in the UK

Mathewson & Rosemond Ltd

Leeds Branch:

Union Mills
9 Dewsbury Road
Leeds
West Yorkshire
LS11 5DE

T: +44 (0)113 245 7983

sales@mathewsonandrosemond.co.uk
www.mathewsonandrosemond.co.uk

Manchester Branch:

Unit 4
Orchard Trading Estate
Langley Road
Salford
M6 6SD

T: +44 (0)161 546 2792

sales@mathewsonandrosemond.co.uk
www.mathewsonandrosemond.co.uk

Bradford Collection Depot:

Macleane House
New Works Road
Low Moor
Bradford
West Yorkshire
BD12 0LZ

T: +44 (0)113 245 7983

sales@mathewsonandrosemond.co.uk
www.mathewsonandrosemond.co.uk



PCC GmbH
P.O. Box 1509
71305 Waiblingen
Germany

Tel.: +49 (0) 71 51 -168 85 -0
info@pcc-press.de
www.pcc-press.de