

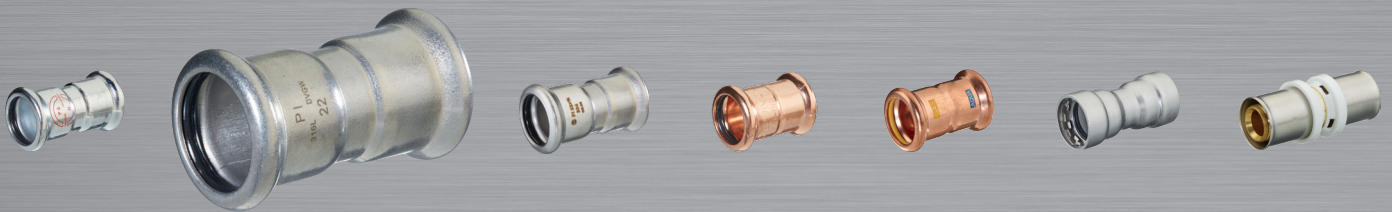
PCCO

PRESS CONNECTING COMPONENTS

INOX M 316L



THE WORLD OF
PRESS CONNECTING COMPONENTS



Mathewson
& Rosemond Ltd



Press Fittings – Product Overview

System	Picture	Press Profile	Dimensions	Material
PRESS STEEL M		M	12 – 108mm	Carbon Steel
PRESS INOX M 316L		M	15 – 168.3mm	Stainless Steel 316L
PRESS INOX M 304		M	15 – 108mm	Stainless Steel 304
PRESS COPPER M		M	15 – 108mm	Copper + Brass
PRESS COPPER AQUAGAS M		M	15 – 54mm	Copper + Brass
PRESS STEEL HD		HD	1/2" – 2"	Carbon Steel
PRESS UNIPRESS		TH	16 – 32mm	Brass + Stainless Sleeve

Press Fittings – Application

System	W WATER	H HEATING	G GAS	A COMPRESSED AIR	S SOLAR	F FIREFIGHTING SYSTEMS	C COOLING	H2 READY	I INDUSTRY
PRESS STEEL M	X	✓	X	✓ [1]	X	✓	✓	X	on request
PRESS INOX M 316L	✓	✓	on request	✓ [1]	✓ [1]	✓	✓	X	on request
PRESS INOX M 304	✓ [2]	✓	X	✓ [1]	✓ [1]	X	✓	X	on request
PRESS COPPER M	✓	✓	on request	on request	✓ [1]	X	✓	X	on request
PRESS COPPER AQUAGAS M	✓	✓	✓	on request	✓ [1]	X	✓	✓	on request
PRESS STEEL HD	X	✓	X	X	X	✓	✓	X	on request
PRESS UNIPRESS	✓	✓	X	on request	X	X	X	X	on request

✓ [1] = with FKM (Viton) O-ring only

X = not suitable

✓ [2] = Industrial applications ON REQUEST

Press Fittings and Pipe Guide

PCC PRESS INOX M 316L





Straight Coupling	MPN	Press Profile	Box Quantity (pieces)
15 x 15	120001515	M	150
18 x 18	120001818	M	120
22 x 22	120002222	M	80
28 x 28	120002828	M	50
35 x 35	120003535	M	24
42 x 42	120004242	M	20
54 x 54	120005454	M	12
66.7 x 66.7	120006666	M	3
76.1 x 76.1	120007676	M	3
88.9 x 88.9	120008888	M	2
108 x 108	1200108108	M	1
139.7 x 139.7	1200139139	M	1
168.3 x 168.3	1200168168	M	1



Slip (Repair) Coupling	MPN	Press Profile	Box Quantity (pieces)
15 x 15	120401515	M	50
18 x 18	120401818	M	30
22 x 22	120402222	M	50
28 x 28	120402828	M	30
35 x 35	120403535	M	20
42 x 42	120404242	M	12
54 x 54	120405454	M	8
66.7 x 66.7	120406666	M	2
76.1 x 76.1	120407676	M	2
88.9 x 88.9	120408888	M	1
108 x 108	1204108108	M	1



End Cap	MPN	Press Profile	Box Quantity (pieces)
15	1241015	M	30
18	1241018	M	30
22	1241022	M	30
28	1241028	M	30
35	1241035	M	24
42	1241042	M	20
54	1241054	M	16
66.7	1241066	M	2
76.1	1241076	M	2
88.9	1241088	M	1
108	1241108	M	1



Straight Male Adaptor	MPN	Press Profile	Box Quantity (pieces)
15 x 1/2"	1201015012	M	150
15 x 3/4"	1201015034	M	100
18 x 1/2"	1201018012	M	120
18 x 3/4"	1201018034	M	100
22 x 1/2"	1201022012	M	100
22 x 3/4"	1201022034	M	80
22 x 1"	1201022100	M	50
28 x 3/4"	1201028034	M	50
28 x 1"	1201028100	M	50
35 x 1"	1201035100	M	24
35 x 1 1/4"	1201035114	M	24
42 x 1 1/2"	1201042112	M	20
54 x 2"	1201054200	M	10
66.7 x 2 1/2"	1201066212	M	1
76.1 x 2 1/2"	1201076212	M	1
88.9 x 3"	1201088300	M	1
108 x 4"	1201108400	M	1



Straight Female Adaptor	MPN	Press Profile	Box Quantity (pieces)
15 x 1/2"	1202015012	M	120
15 x 3/4"	1202015034	M	80
18 x 1/2"	1202018012	M	120
18 x 3/4"	1202018034	M	80
22 x 1/2"	1202022012	M	100
22 x 3/4"	1202022034	M	80
22 x 1"	1202022100	M	50
28 x 3/4"	1202028034	M	50
28 x 1"	1202028100	M	50
35 x 1"	1202035100	M	24
35 x 1 1/4"	1202035114	M	24
42 x 1 1/2"	1202042112	M	20
54 x 2"	1202054200	M	10



90° Elbow (F x F)	MPN	Press Profile	Box Quantity (pieces)
15 x 15	122001515	M	100
18 x 18	122001818	M	80
22 x 22	122002222	M	50
28 x 28	122002828	M	30
35 x 35	122003535	M	12
42 x 42	122004242	M	8
54 x 54	122005454	M	6
66.7 x 66.7	122006666	M	2
76.1 x 76.1	122007676	M	2
88.9 x 88.9	122008888	M	1
108 x 108	1220108108	M	1
139.7 x 139.7	1220139139	M	1
168.3 x 168.3	1220168168	M	1



90° Street Elbow (M x F)	MPN	Press Profile	Box Quantity (pieces)
15 x 15	122101515	M	100
18 x 18	122101818	M	80
22 x 22	122102222	M	50
28 x 28	122102828	M	30
35 x 35	122103535	M	12
42 x 42	122104242	M	8
54 x 54	122105454	M	6
66.7 x 66.7	122106666	M	2
76.1 x 76.1	122107676	M	2
88.9 x 88.9	122108888	M	1
108 x 108	1221108108	M	1



45° Elbow (F x F)	MPN	Press Profile	Box Quantity (pieces)
15 x 15	122301515	M	120
18 x 18	122301818	M	100
22 x 22	122302222	M	60
28 x 28	122302828	M	30
35 x 35	122303535	M	20
42 x 42	122304242	M	12
54 x 54	122305454	M	6
66.7 x 66.7	122306666	M	2
76.1 x 76.1	122307676	M	2
88.9 x 88.9	122308888	M	1
108 x 108	1223108108	M	1
139.7 x 139.7	1223139139	M	1
168.3 x 168.3	1223168168	M	1



45° Street Elbow (M x F)	MPN	Press Profile	Box Quantity (pieces)
15 x 15	122401515	M	120
18 x 18	122401818	M	100
22 x 22	122402222	M	60
28 x 28	122402828	M	30
35 x 35	122403535	M	20
42 x 42	122404242	M	12
54 x 54	122405454	M	6
66.7 x 66.7	122406666	M	2
76.1 x 76.1	122407676	M	2
88.9 x 88.9	122408888	M	1
108 x 108	1224108108	M	1



90° Male Elbow	MPN	Press Profile	Box Quantity (pieces)
15 x 1/2"	1231015012	M	80
18 x 1/2"	1231018012	M	60
22 x 3/4"	1231022034	M	40
28 x 1"	1231028100	M	20
35 x 1 1/4"	1231035114	M	12
42 x 1 1/2"	1231042112	M	8
54 x 2"	1231054200	M	4



90° Female Elbow	MPN	Press Profile	Box Quantity (pieces)
15 x 1/2"	1232015012	M	80
18 x 1/2"	1232018012	M	60
22 x 3/4"	1232022034	M	40
28 x 1"	1232028100	M	20
35 x 1 1/4"	1232035114	M	12



Socket Reducer	MPN	Press Profile	Box Quantity (pieces)
18 x 15	124301815	M	120
22 x 15	124302215	M	120
22 x 18	124302218	M	100
28 x 15	124302815	M	80
28 x 18	124302818	M	80
28 x 22	124302822	M	60
35 x 22	124303522	M	40
35 x 28	124303528	M	32
42 x 22	124304222	M	24
42 x 28	124304228	M	24
42 x 35	124304235	M	24
54 x 22	124305422	M	12
54 x 28	124305428	M	12
54 x 35	124305435	M	12
54 x 42	124305442	M	12
66.7 x 28	124306628	M	3
66.7 x 35	124306635	M	3
66.7 x 42	124306642	M	3
66.7 x 54	124306654	M	3
76.1 x 42	124307642	M	3
76.1 x 54	124307654	M	3
76.1 x 66.7	124307666	M	3
88.9 x 54	124308854	M	1
88.9 x 76.1	124308876	M	1
108 x 54	124310854	M	1
108 x 66.7	124310866	M	1
108 x 76.1	124310876	M	1
108 x 88.9	124310888	M	1
139.7 x 108	1243139108	M	1
168.3 x 108	1243168108	M	1
168.3 x 139.7	1243168139	M	1



Equal Tee	MPN	Press Profile	Box Quantity (pieces)
15 x 15 x 15	12100151515	M	80
18 x 18 x 18	12100181818	M	60
22 x 22 x 22	12100222222	M	40
28 x 28 x 28	12100282828	M	24
35 x 35 x 35	12100353535	M	12
42 x 42 x 42	12100424242	M	8
54 x 54 x 54	12100545454	M	4
66.7 x 66.7 x 66.7	12100666666	M	2
76.1 x 76.1 x 76.1	12100767676	M	1
88.9 x 88.9 x 88.9	12100888888	M	1
108 x 108 x 108	1210108108108	M	1
139.7 x 139.7 x 139.7	1210139139139	M	1
168.3 x 168.3 x 168.3	1210168168168	M	1



Branch Reducing Tee	MPN	Press Profile	Box Quantity (pieces)
18 x 15 x 18	12110181518	M	60
22 x 15 x 22	12110221522	M	40
22 x 18 x 22	12110221822	M	40
28 x 15 x 28	12110281528	M	30
28 x 18 x 28	12110281828	M	30
28 x 22 x 28	12110282228	M	30
35 x 15 x 35	12110351535	M	16
35 x 18 x 35	12110351835	M	16
35 x 22 x 35	12110352235	M	16
35 x 28 x 35	12110352835	M	16
42 x 22 x 42	12110422242	M	12
42 x 28 x 42	12110422842	M	12
42 x 35 x 42	12110423542	M	10
54 x 22 x 54	12110542254	M	6
54 x 28 x 54	12110542854	M	6
54 x 35 x 54	12110543554	M	6
54 x 42 x 54	12110544254	M	6
66.7 x 28 x 66.7	12110662866	M	2
66.7 x 35 x 66.7	12110663566	M	2
66,7 x 42 x 66.7	12110664266	M	2
66,7 x 54 x 66.7	12110665466	M	2
76.1 x 22 x 76.1	12110762276	M	1
76.1 x 28 x 76.1	12110762876	M	1
76.1 x 35 x 76.1	12110763576	M	1
76.1 x 42 x 76.1	12110764276	M	1
76.1 x 54 x 76.1	12110765476	M	1
76.1 x 66.7 x 76.1	12110766676	M	1
88.9 x 54 x 88.9	12110885488	M	1
88.9 x 76.1 x 88.9	12110887688	M	1
108 x 54 x 108	121110854108	M	1
108 x 66.7 x 108	121110866108	M	1
108 x 76.1 x 108	121110876108	M	1
108 x 88.9 x 108	121110888108	M	1
139.7 x 108 x 139.7	1211139108139	M	1
168.3 x 108 x 168.3	1211168108168	M	1
168.3 x 139.7 x 168.3	1211168139168	M	1



Female Tee	MPN	Press Profile	Box Quantity (pieces)
15 x 1/2" x 15	12120151215	M	60
18 x 1/2" x 18	12120181218	M	50
22 x 1/2" x 22	12120221222	M	40
22 x 3/4" x 22	12120223422	M	40
28 x 1/2" x 28	12120281228	M	30
28 x 3/4" x 28	12120283428	M	24
35 x 1/2" x 35	12120351235	M	16
35 x 3/4" x 35	12120353435	M	12
42 x 1/2" x 42	12120421242	M	10
42 x 3/4" x 42	12120423442	M	8
54 x 1/2" x 54	12120541254	M	6
54 x 3/4" x 54	12120543454	M	6
66.7 x 3/4" x 66.7	12120663466	M	2
76.1 x 3/4" x 76.1	12120763476	M	1
88.9 x 3/4" x 88.9	12120883488	M	1
108 x 3/4" x 108	121210834108	M	1



Tap Connector	MPN	Press Profile	Box Quantity (pieces)
15 x 3/4"	1207015034	M	30
18 x 3/4"	1207018034	M	30
22 x 1"	1207022100	M	30
28 x 1 1/4"	1207028114	M	24
35 x 1 1/2"	1207035112	M	24



Male Union	MPN	Press Profile	Box Quantity (pieces)
15 x 1/2"	1208015012	M	10
18 x 1/2"	1208018012	M	10
22 x 3/4"	1208022034	M	10
28 x 1"	1208028100	M	8
35 x 1 1/4"	1208035114	M	8
42 x 1 1/2"	1208042112	M	4
54 x 2"	1208054200	M	2



Female Wallplate 90° Elbow	MPN	Press Profile	Box Quantity (pieces)
15 x 1/2"	1234015012	M	50
18 x 1/2"	1234018012	M	40
22 x 3/4"	1234022034	M	30



Straight Male Socket Adaptor	MPN	Press Profile	Box Quantity (pieces)
15 x 1/2"	1245015012	M	120
18 x 1/2"	1245018012	M	120
22 x 3/4"	1245022034	M	80



Straight Female Socket Adaptor	MPN	Press Profile	Box Quantity (pieces)
15 x 1/2"	1246015012	M	50
18 x 1/2"	1246018012	M	50
22 x 1/2"	1246022012	M	40
22 x 3/4"	1246022034	M	40
28 x 1"	1246028100	M	40



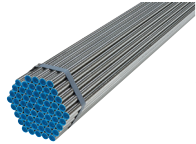
PN16 Flange	MPN	Press Profile	Box Quantity (pieces)
22 x DN20	1240022	M	1
28 x DN25	1240028	M	1
35 x DN32	1240035	M	1
42 x DN40	1240042	M	1
54 x DN50	1240054	M	1
66.7 x DN65	1240066	M	1
76.1 x DN65	1240076	M	1
76.1 x DN80	1240576	M	1
88.9 x DN80	1240088	M	1
108 x DN100	1240108	M	1
139.7 x DN125	1240139	M	1
168.3 x DN150	1240168	M	1



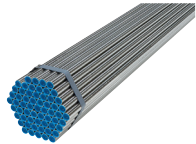
90° Male Elbow (M x M)	MPN	Press Profile	Box Quantity (pieces)
15 x 15	123501515	M	60
18 x 18	123501818	M	50
22 x 22	123502222	M	40
28 x 28	123502828	M	20
35 x 35	123503535	M	6
42 x 42	123504242	M	2
54 x 54	123505454	M	2



Partial Crossover / Bypass Elbow (M x M)	MPN	Press Profile	Box Quantity (pieces)
15 x 15	123601515	M	60
18 x 18	123601818	M	60
22 x 22	123602222	M	40
28 x 28	123602828	M	16



Stainless Steel Pipe 316L/1.4404 DIN EN 10312-2	MPN	Bundle Quantity (metres)
PRESS INOX 316L PIPE 15 x 1.0	129001510	420
PRESS INOX 316L PIPE 18 x 1.0	129001810	360
PRESS INOX 316L PIPE 22 x 1.2	129002212	360
PRESS INOX 316L PIPE 28 x 1.2	129002812	240
PRESS INOX 316L PIPE 35 x 1.5	129003515	150
PRESS INOX 316L PIPE 42 x 1.5	129004215	120
PRESS INOX 316L PIPE 54 x 1.5	129005415	90
PRESS INOX 316L PIPE 76.1 x 2.0	129007620	60
PRESS INOX 316L PIPE 88.9 x 2.0	129008820	30
PRESS INOX 316L PIPE 108 x 2.0	129010820	30
PRESS INOX 316L PIPE 139.7 x 2.0	129013920	30
PRESS INOX 316L PIPE 168.3 x 2.0	129016820	30



Stainless Steel Pipe 316 ECO/1.4404 DIN EN 10312-1	MPN	Bundle Quantity (metres)
PRESS INOX 316 ECO PIPE 15 x 0.6	129501506	420
PRESS INOX 316 ECO PIPE 18 x 0.7	129501807	360
PRESS INOX 316 ECO PIPE 22 x 0.7	129502207	360
PRESS INOX 316 ECO PIPE 28 x 0.8	129502808	240
PRESS INOX 316 ECO PIPE 35 x 1.0	129503510	150
PRESS INOX 316 ECO PIPE 42 x 1.1	129504211	120
PRESS INOX 316 ECO PIPE 54 x 1.2	129505412	90
PRESS INOX 316 ECO PIPE 66.7 x 1.5	129506615	60
PRESS INOX 316 ECO PIPE 76.1 x 1.5	129507615	60
PRESS INOX 316 ECO PIPE 88.9 x 1.5	129508815	30
PRESS INOX 316 ECO PIPE 108 x 2.0	129510820	30

Specification

Materials:

- Formed components (**fittings**) material no.: 1.4404 according to EN 10088/316L
- Casting components (**threaded fittings**) material no.: 1.4408 according to EN 10283/316L
- **Pipe** material no.: 1.4404 according to EN 10312-2
- **Pipe** material no.: 1.4404 according to EN 10312-1

Guarantee:

Provided your PRESS INOX M 316L (Stainless Steel) tube and fittings have been installed correctly and as per the installation guidelines set out by PCC, you can enjoy 40 years of trouble free service and operation from your new system. If you would like further information on training and installation techniques, or guarantee details, please contact us.

Applications:

- Drinking Water (fully WRAS approved);
- Purified Water;
- Heating;
- Cooling Water (chilled water);
- Boosted Cold Water;
- Plant Rooms;
- Steam Condensate (using **FKM** seals);
- Flammable Gases, classed and according to DVGW G 260 and G 262 (using **HNBR** - gas approved yellow seals);
- Compressed Air Systems, Argon, Nitrogen, Carbon Dioxide (using **FKM** seals).

Pressure and temperature ratings:

When used alongside fittings with **EPDM** seals for applications other than Compressed Air:

- | | | |
|-------------------------|---------------|-----------------|
| – 15-22mm (EN 10312-2): | (PN40) 40 bar | -30°C to +120°C |
| – 15-22mm (EN 10312-1): | (PN16) 16 bar | -30°C to +120°C |
| – 28-35mm (EN 10312-2): | (PN25) 25 bar | -30°C to +120°C |
| – 28-35mm (EN 10312-1): | (PN16) 16 bar | -30°C to +120°C |
| – 42-168.3mm: | (PN16) 16 bar | -30°C to +120°C |

When used alongside fittings with **HNBR** seals for applications involving Flammable Gases:

- | | | |
|---------------|-------------|----------------|
| – 15-168.3mm: | (PN5) 5 bar | -20°C to +70°C |
|---------------|-------------|----------------|

When used alongside fittings with **FKM** seals for Compressed Air applications:

- | | | |
|---------------|---------------|-----------------|
| – 15-168.3mm: | (PN16) 16 bar | -30°C to +120°C |
|---------------|---------------|-----------------|


Press tools:

All PRESS INOX M 316L (Stainless Steel) fittings follow the popular 'M' Profile and, therefore, are pressable with all suitable and system-compatible 'M' Profile pressing tools. Please see manufacturers' website for details on pressing tools.



WRAS PRODUCT APPROVAL CERTIFICATE

Approval Number
241102057

Field of application	Products complying with the Water Supply (Water Fittings) Regulations 1999 (England & Wales), the Water Supply (Water Fittings) (Scotland) Byelaws 2014 and the Water Supply (Water Fittings) Regulations (Northern Ireland) 2009.
Approval holder	PCC GmbH
WRAS directory section	1180
Product type	Fittings for use with Tube and Pipe
Model	PRESS-INOX RANGE OF STAINLESS-STEEL CRIMPED FITTINGS (FOR MODELS AND SIZES COVERED BY THE SCOPE OF THIS APPROVAL PLEASE CONSULT THE WRAS ONLINE DIRECTORY AND/OR ACCOMPANYING WRAS APPROVAL LETTER)
Basis of compliance	Regulator Specifications (TCS) / BS Standard
Valid from	November 2024
Date of expiry	November 2029
Authorised by	 Ian Hughes, WRAS Approvals Manager



The certificate by itself is not evidence of a valid WRAS Approval. The certificate must always be shared with the supporting letter. Confirmation of the current status of an approval must be obtained from the WRAS Approvals Directory (www.wrasapprovals.co.uk/directory/)



Certificate issued: 8th January 2025



Commercial Plumbing, Ventilation & Pipeline Merchants

Mathewson & Rosemond represents PCC GmbH in the UK

Mathewson & Rosemond Ltd

Leeds Branch:

Union Mills
9 Dewsbury Road
Leeds
West Yorkshire
LS11 5DE

T: +44 (0)113 245 7983

sales@mathewsonandrosemond.co.uk
www.mathewsonandrosemond.co.uk

Manchester Branch:

Unit 4
Orchard Trading Estate
Langley Road
Salford
M6 6SD

T: +44 (0)161 546 2792

sales@mathewsonandrosemond.co.uk
www.mathewsonandrosemond.co.uk

Bradford Collection Depot:

Macleane House
New Works Road
Low Moor
Bradford
West Yorkshire
BD12 0LZ

T: +44 (0)113 245 7983

sales@mathewsonandrosemond.co.uk
www.mathewsonandrosemond.co.uk



PCC GmbH
P.O. Box 1509
71305 Waiblingen
Germany

Tel.: +49 (0) 71 51 -168 85 -0
info@pcc-press.de
www.pcc-press.de