

# PCCO

PRESS CONNECTING COMPONENTS



THE WORLD OF  
PRESS CONNECTING COMPONENTS



PCCO UK



## The Company



### The Company

Decades of experience in sales together with highly motivated employees in construction, development and production are the basis of success of the PCC products worldwide.

**PCC GmbH** is the specialist and reliable partner for system components and special solutions for press fitting technology.



### Production and Assembly

All **PCC Press Fittings** are developed in Germany. They are manufactured on PCC's own modern and flexible production facilities in Asia. The production processes are monitored continuously by the PCC QC Department as well as the external approval institutes.



### Sustainability

Since 2019 **PCC GmbH** has been actively working on reducing the carbon footprint caused by the company and its business at the Waiblingen location. By providing financial support for certified climate protection projects, **PCC GmbH** contributes to the achievement of international climate targets. These projects lead to a reduction or storage of greenhouse gas emissions equivalent to the amount of its own emissions.

## Approvals



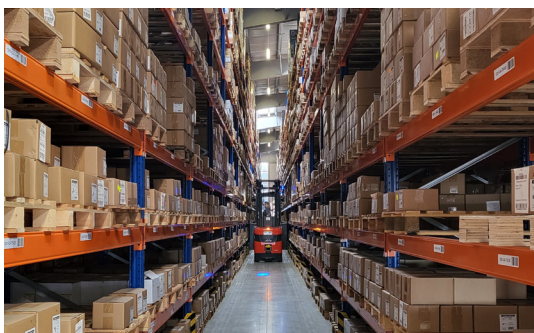
## The Company

### Warehouse and Logistics

All of the **PCC GmbH** warehouses located in Southern Germany. A fast worldwide delivery of all PCC products is guaranteed in co-operation with Rüdinger Spedition, a well-known logistical company.

More than 3 million pieces of PCC press fittings and several hundred thousand metres of carbon steel and stainless steel pipe are constantly in stock.

Press Fittings Warehouse **Osterburken, Germany**



Pipe Warehouse **Weikersheim, Germany**



## Press Fittings – Product Overview

System	Picture	Press Profile	Dimensions	Material
<b>PRESS STEEL M</b>		M	12 – 108mm	Carbon Steel
<b>PRESS INOX M 316L</b>		M	15 – 168.3mm	Stainless Steel 316L
<b>PRESS INOX M 304</b>		M	15 – 108mm	Stainless Steel 304
<b>PRESS COPPER M</b>		M	15 – 108mm	Copper + Brass
<b>PRESS COPPER AQUAGAS M</b>		M	15 – 54mm	Copper + Brass
<b>PRESS STEEL HD</b>		HD	1/2" – 2"	Carbon Steel
<b>PRESS UNIPRESS</b>		TH	16 – 32mm	Brass + Stainless Sleeve

## Press Fittings – Application

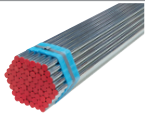
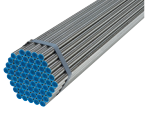
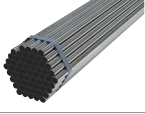


System	 W WATER	 H HEATING	 G GAS	 A COMPRESSED AIR	 S SOLAR	 F FIREFIGHTING SYSTEMS	 C COOLING	 H2 READY	 I INDUSTRY
<b>PRESS STEEL M</b>	X	✓	X	✓ [1]	X	✓	✓	X	on request
<b>PRESS INOX M 316L</b>	✓	✓	on request	✓ [1]	✓ [1]	✓	✓	X	on request
<b>PRESS INOX M 304</b>	✓ [2]	✓	X	✓ [1]	✓ [1]	X	✓	X	on request
<b>PRESS COPPER M</b>	✓	✓	on request	on request	✓ [1]	X	✓	X	on request
<b>PRESS COPPER AQUAGAS M</b>	✓	✓	✓	on request	✓ [1]	X	✓	✓	on request
<b>PRESS STEEL HD</b>	X	✓	X	X	X	✓	✓	X	on request
<b>PRESS UNIPRESS</b>	✓	✓	X	on request	X	X	X	X	on request

✓ [1] = with FKM (Viton) o-ring only

X = not suitable

✓ [2] = Industrial applications ON REQUEST

## Pipe – Product Overview

<i>System</i>	<i>Picture</i>	<i>Standard</i>	<i>Dimensions</i>	<i>Material</i>
<b>PRESS STEEL PIPE</b>		DIN EN 10305-3	12 – 108mm	Carbon Steel Pipe (Zinc Plated Outside)
<b>PRESS INOX 316L PIPE</b>		DIN EN 10312-2 DVGW certified	15 – 168.3mm	Stainless Steel Pipe 316L/1.4404
<b>PRESS INOX 304 PIPE</b>		DIN EN 10088-3	15 – 108mm	Stainless Steel Pipe 304/1.4301
<b>PRESS UNIPRESS ML PIPE</b>		PEX/AL/PEX	16 – 32mm	Multilayer Pipe
<b>PRESS UNIPRESS ML PIPE</b>		PEX/AL/PEX	16 – 32mm	Multilayer Pipe Pre-insulated

## Pipe and Press Fittings System Compatibility

<i>System</i>	<i>Compatible Pipe</i>
<b>PRESS STEEL M</b>	Carbon Steel Pipe according to <b>DIN EN 10305-3</b>
<b>PRESS INOX M 316L</b>	Stainless Steel Pipe <b>316L/1.4404</b> and Stainless Steel Pipe <b>304/1.4301</b> according to <b>DIN EN 10312-1</b> or <b>-2</b> and <b>DIN EN 10088-3</b>
<b>PRESS INOX M 304</b>	Stainless Steel Pipe <b>304/1.4301</b> according to <b>DIN EN 10088-3</b>
<b>PRESS COPPER M</b>	Seamless Copper Pipe (semi-hard and hard) according to <b>DIN EN 1057</b> and <b>DVGW worksheet GW392</b>
<b>PRESS COPPER AQUAGAS M</b>	Seamless Copper Pipe (semi-hard and hard) according to <b>DIN EN 1057</b> and <b>DVGW worksheet GW392</b>
<b>PRESS STEEL HD</b>	Pipe according to <b>DIN EN 10255</b> , <b>DIN EN 10220 / DIN EN 10216-1</b> , <b>DIN EN 10220 / DIN EN 10217-1</b> .
<b>PRESS UNIPRESS</b>	Suitable Multilayer Pipe <b>PEX/AL/PEX</b> and suitable <b>PE-RT</b> Pipe.

For further information please refer to the technical manual.



PCC UK  
Maclean House  
New Works Road  
Low Moor  
Bradford  
West Yorkshire  
BD12 0LZ

Tel.: +44 (0) 1274 015 057

[sales@pcc-uk.com](mailto:sales@pcc-uk.com)  
[www.pcc-uk.co.uk](http://www.pcc-uk.co.uk)

Errors and omissions accepted (E&OE)